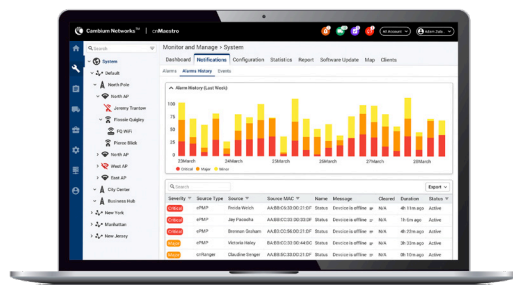
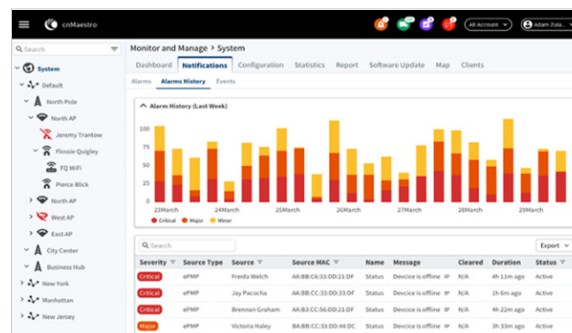


cnMaestro™ Management System

QUICK LOOK:

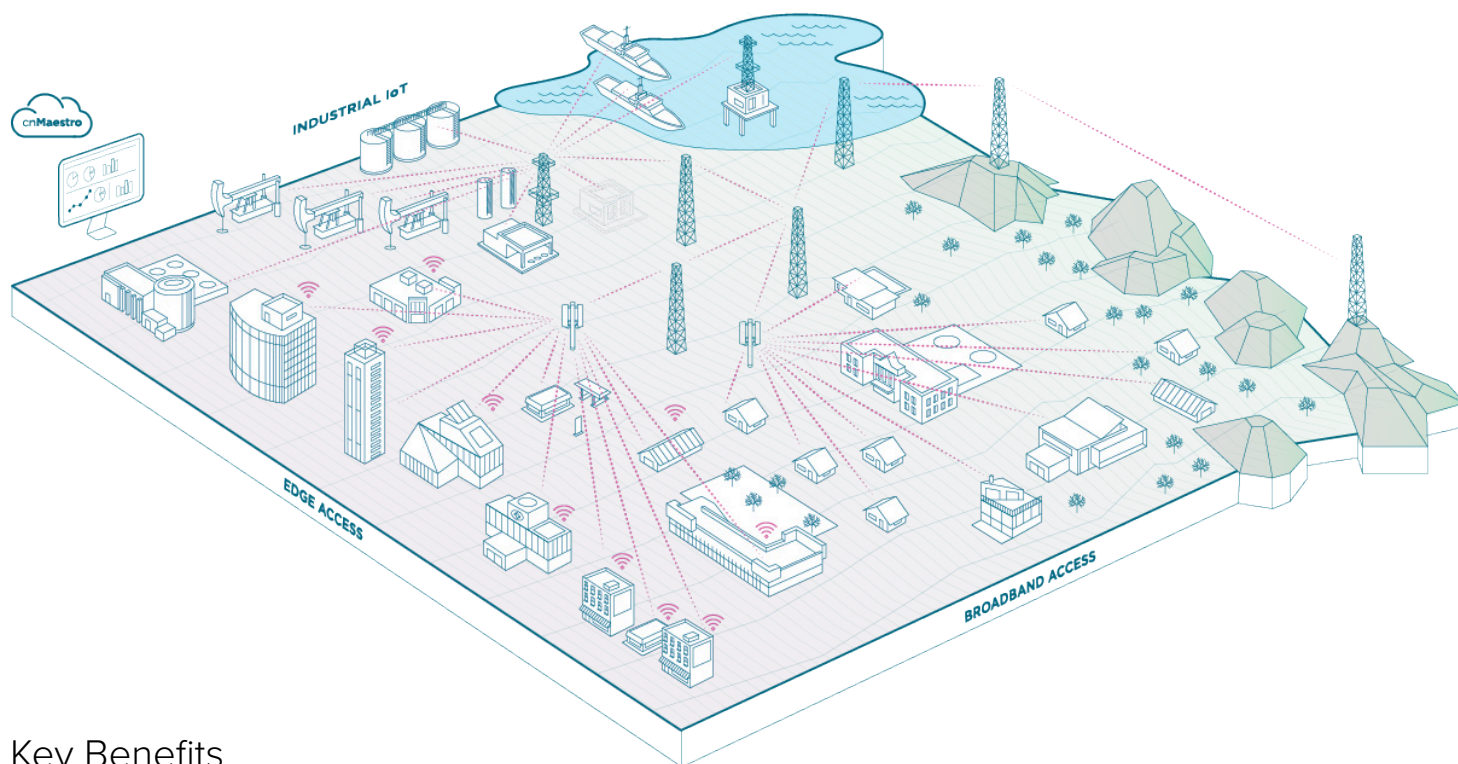
cnMaestro is a simple, yet sophisticated cloud-first next-generation network management solution for Cambium Networks wireless and wired solutions. cnMaestro offers elastic scalability and single-pane-of-glass management to deliver secure, end-to-end network and wireless lifecycle management with zero-touch provisioning, monitoring, and troubleshooting capabilities. It simplifies operations and ongoing maintenance. This license-free cloud option delivers a disruptive Total Cost of Ownership (TCO) for organizations of all sizes.



Key Highlights

- Unified management platform via a single dashboard for Cambium's wireless & wired portfolio: Enterprise Wi-Fi, Switching, Fixed Wireless Broadband and Industrial IoT products.
- Zero-touch provisioning: Create, provision, monitor and manage the entire network of wireless and wired devices from a single dashboard login with key performance metrics, alarms and alerts. The cloud-first UI design is easy to learn and applies across the portfolio, helps network administrators simplify operations and allows them to deliver an optimal client experience.
- Deployment flexibility & TCO: Choice of public cloud, private cloud or on-premises deployment with best TCO. cnMaestro helps reduce operating cost and accelerate return on investment. Comprehensive cloud management is included with the hardware.
- Tailored views for Enterprise, Managed Service Provider (MSP) & Access & Backhaul

cnMaestro™ Management System



Key Benefits

cnMaestro's multi-site, multi-product cloud management spans long-range fixed wireless broadband, enterprise Ethernet, enterprise Wi-Fi and service provider residential Wi-Fi for the most comprehensive and powerful single-pane-of-glass system in the industry. Ideal for any service provider or enterprise network operator, the cnMaestro cloud dashboard can be tailored to the exact network need from managed service providers (MSP), to fixed wireless service providers and enterprise networks. cnMaestro provides centralized visibility and control for Cambium Networks' wireless and wired products. Network administrators can quickly and easily deploy networks with minimal training. Whether small sites or large distributed networks with thousands of sites, cnMaestro makes deployment and operations easy.

cnMaestro architecture is built for scale and security at all levels. Devices connect to cnMaestro cloud using SSL-enabling deployments without changes to the firewall configuration. Cambium Intelligent edge architecture enables fault-tolerant networks where the network continues to operate even when the cloud is unreachable due to a WAN outage. cnMaestro cloud management is included with the price of the wireless or wired device to manage a broadband-to-Ethernet and Wi-Fi network at no additional cost.

cnMaestro delivers everything you need from zero-touch provisioning to enterprise-grade automatic RF management for networks up to thousands of sites, and up to 10,000 managed devices from a single cnMaestro account. Experience the power, redundancy, resilience and simplicity of a cloud-first network management.

cnMaestro eliminates the need for Wi-Fi controllers, thereby reducing complexity and cost of deploying Wi-Fi networks. cnMaestro delivers the best TCO on-premise & in-cloud for Fixed Wireless Broadband, Enterprise Wi-Fi and Switching customers. Flexible deployment options allow customers to choose a model that fits their organizational needs: public cloud, private cloud or on-premise deployment.

cnMaestro provides a bird's eye view of the health of the network with insights on performance, connectivity and client experience. Administrators can quickly identify potential trouble spots and drill down from network-to-client level details. Automatic network monitoring and alerts allow for proactive management of the network. cnMaestro provides visibility into devices and users and while giving administrators the information needed to enforce

cnMaestro™ Management System



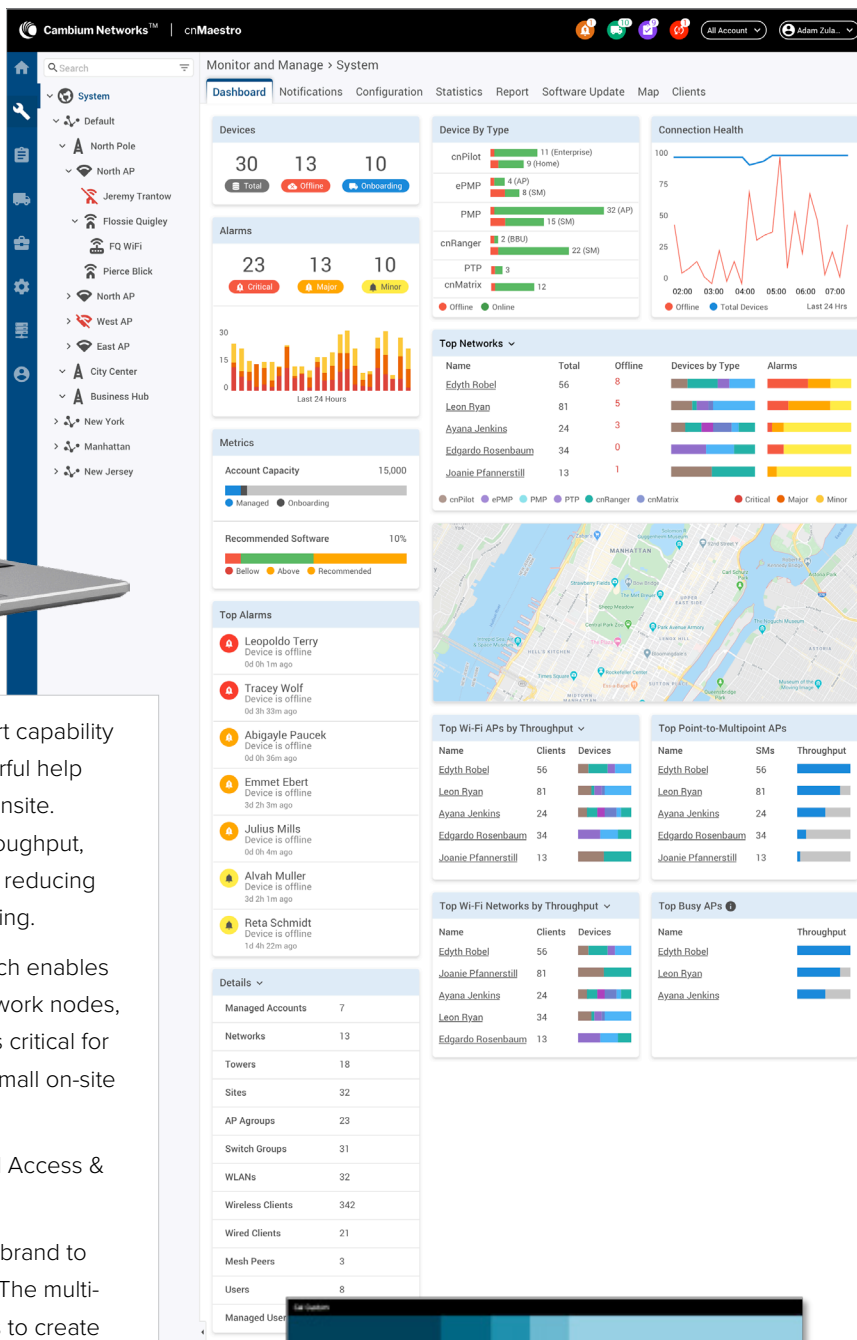
policies and optimize performance. Remote support capability is integrated into the architecture, along with powerful help desk tools to debug remote issues without going onsite. Troubleshooting tools such as ping, traceroute, throughput, and live packet captures are included, dramatically reducing resolution times and enabling remote troubleshooting.

cnMaestro supports custom network hierarchy which enables easy configuration, monitoring & debugging at network nodes, reducing operational costs. This specially becomes critical for large networks or small distributed networks with small on-site IT staff.

cnMaestro provides Enterprise view, MSP view and Access & Backhaul view.

MSP-Ready Platform: MSPs can differentiate their brand to address specific sub-markets in their service area. The multi-tier customization gives the MSP tenant cloud tools to create an additional layer of guest portal customization – all managed from the cloud. MSP views consolidate the MSP tenant statistics, while allowing the MSP to drill down and support a tenant directly, without impacting data from other tenants or end users on the system.

Access & Backhaul view provides visualization & control of devices from tower-to-edge. This includes PTP and PMP devices.



cnMaestro™ Management System

Management System Details

Deployment

- Cloud-Hosted Web Portal
- Customer-Hosted VMware OVA
- Amazon Marketplace AMI
- Managed Service Provider Accounts
- High Availability (1+1) for on-prem
- Redundant cloud services

Visualization

- Full Visibility Across Network
- Supports ePMP™, cnMatrix™, cnPilot™, PMP, PTP, cnReach™
- Multiple Product Views
- Access and Backhaul View
- Enterprise Wireless View
- Industrial Internet View
- Hierarchical Device Tree
- PMP/ePMP Sector Display

Monitoring

- Dedicated Device Dashboards
- Statistics and Trending
- Email Alerts, Webhooks, Syslog

Data and Reporting

- Statistics Reports Exported in CSV
- RESTful Monitoring/Provisioning API
- Export UI Tables in CSV or PDFtes

Administration

- Role-Based Access
- Audit Logs
- RADIUS, TACACS+, LDAP, and AD Login

Onboarding and Provisioning

- Zero-Touch Onboarding
- Template Configuration
- Object Configuration (cnPilot)
- Scheduled System Backup
- Configuration Lock
- Automatic Bulk Software Update
- Claim PMP SMs Associated with AP

Network Services

- Branded Guest Access Portal
- Social Login and SMS Authentication
- Access Vouchers
- PayPal Payment Gateway
- GRE Tunneling

Management

- Simplified Wireless LAN View
- AP Group and WLAN Configuration
- Site Support for Collocated APs

Troubleshooting and Forensics

- Tower-to-Edge View
- Technical Support Dump
- Rogue AP Detection
- Wi-Fi Packet Capture
- ePMP/PMP Link Test

Security

- Communication over SSL
- No Inbound Internet Access
- Not-in-Traffic Path (GRE exception)
- Disaster recovery

cnMaestro™ Management System



GET STARTED at
cloud.cambiumnetworks.com

ABOUT CAMBIUM NETWORKS

Cambium Networks empowers millions of people with wireless connectivity worldwide. Its wireless portfolio is used by commercial and government network operators as well as broadband service providers to connect people, places and things. With a single network architecture spanning fixed wireless and Wi-Fi, Cambium Networks enables operators to achieve maximum performance with minimal spectrum. End-to-end cloud management transforms networks into dynamic environments that evolve to meet changing needs with minimal physical human intervention. Cambium Networks empowers a growing ecosystem of partners who design and deliver gigabit wireless solutions that just work.

cambiumnetworks.com

06232020